

FEBRUARY 2024



MONTHLY NEWSLETTER

THE CAMPUS | **at SGV**



[THECAMPUSATSGV.com](https://www.thecampusatsgv.com)

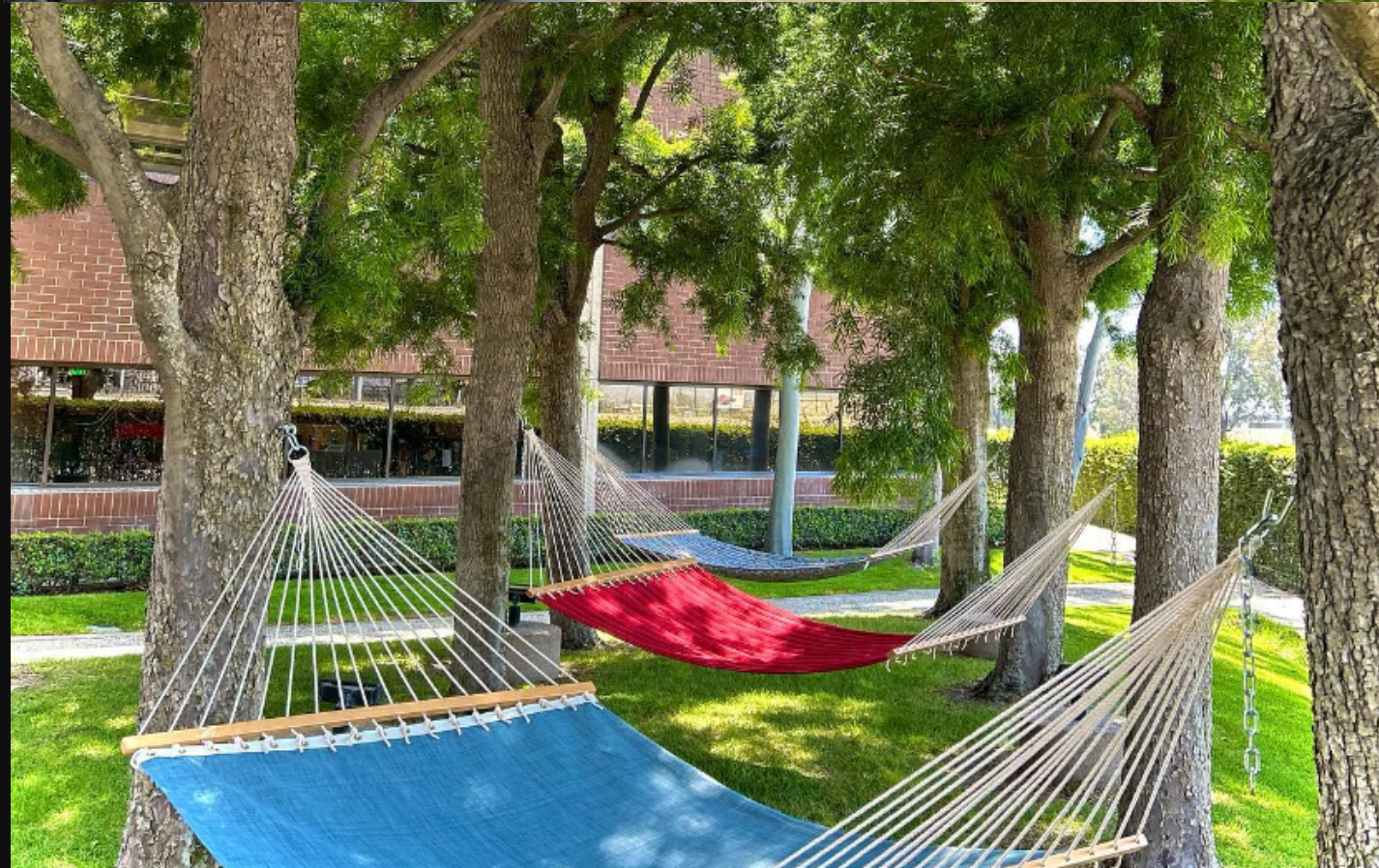


Welcome

704,620 square foot, low-rise suburban office campus

ABOUT

Comprised of three separate buildings, the campus was developed in 1989 by Home Savings of America and originally served as their state of the art corporate headquarters.



Social Media @thecampusatsgv

FOR MANAGEMENT:



+626-813-2525

CAMPUS AMENITIES

EXPERIENCE ALL THAT THE CAMPUS HAS TO OFFER

AVAILABLE DAILY

Monday - Friday

ENJOY THE CAMPUS TODAY!



BIKE SHARE PROGRAM



HAMMOCK GARDEN



GYM FACILITY

- HAMMOCK GARDEN
- BIKE SHARE PROGRAM
- PUTTING GREEN
- RAQUETBALL COURTS
- ARCADE
- BASKETBALL COURTS
- WALKING PATH

- FILTERED WATER STATIONS
- GYM FACILITY
- CONFERENCE ROOMS
- EV-CHARGING
- LOCKER ROOMS
- YOGA
- ON-SITE CAFE - TRIMANA



JANUARY RECAP

- Thank you to employees who participated in Cookie Thursday!



UPCOMING EVENTS

- ***Chocolate Thursday's*** every Thursday for the month of February. All employees are welcome to stop by Suite A-110 from 12:00 PM - 1:00 PM for a sweet treat!



**Property Management Office | 4900 Rivergrade Rd.
Suite A-110 (626) 813-2525 | Hours: M-F (8AM-5PM)**



Hosted by
7Elements Yoga

Yoga Class

Join us Every Tuesday
@12:15 PM

SIGN UP

Duration: 50 Minutes

FREE TO SIGN UP

Located at the 4900 Building
Racquetball Court

WEBSITE

Yoga Session that blends
movement with meditation to
clear your head and recharge
your body.





**MONTHLY
SPECIAL:
(2) CHICKEN
STREET TACOS
\$7.49**

TRIMANA CAFE

4910 BUILDING

Everything Prepared with High Quality, Rich Taste and Made Fresh on Order.



HOURS

7:00A.M. - 3:00P.M. | Monday - Friday



GYM FACILITY

START YOUR JOURNEY WITH US

HOURS : 6AM - 12AM DAILY
LOCATION : 4900 RIVERGRADE RD.

[VISIT WEBSITE](#)

REACH YOUR BODY GOALS

- The Fitness Center is for the exclusive use of tenants and employees only. NO Guests Allowed.
- Waivers must be signed in order to be granted access to the fitness center.
- Food and beverages not allowed. Water bottles only.
- Shoes and shirts must be worn at all times.
- Tenants and Employees must carry a towel and wipe down equipment after use.
- Use of the equipment in the fitness center is at your own risk.





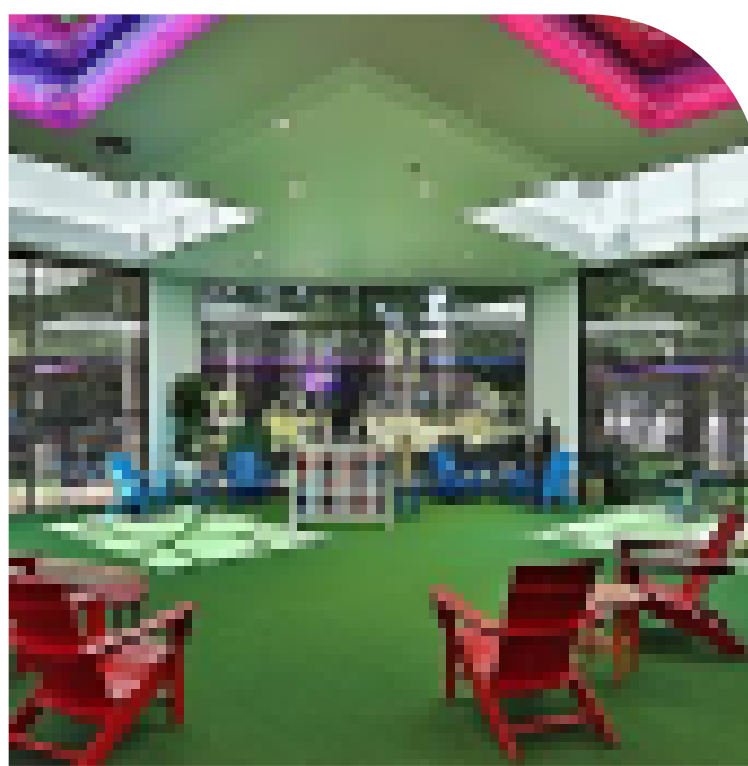
NEED A WORK BREAK? EXPLORE STUDIO 89'



HOURS : M- F | 8AM - 5PM



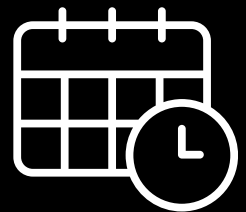
SHOOT TO WIN



LOUNGE



FOOSEBALL



AVAILABLE DAILY




The Campus | at SGV
4900 Rivergrade Rd.

- Download the movatic app and create an account
- Scan the QR code on the bike
- Enjoy your ride! Be sure to follow all rules of the road, & always ride in control
- Lock your bike to a station and select end rental in app

BIKE SHARE PROGRAM

**RIDE
TODAY!**

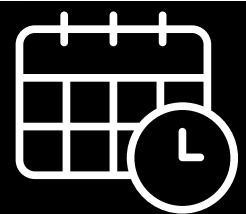
 (313) 217 - 9220

 support@tandem-mobility.com

- A** 4 Pedestals, 8 Ports
- B** 8 Pedestals, 16 Ports
- C** 5 Pedestals, 10 Ports



***Each pedestal has two ports.**



AVAILABLE DAILY



The Campus | at SGV

- Sign up for ChargePoint or log in to your account in the app
- To request to connect, open the main menu then click "Account"
- Click "Connections"
- Then tap the "Browse Connections" buttons
- Search for an organization by name or enter a connection code (Please contact MGMT office for connection code)

Management Office | (626) 813 - 2525

EV CHARGING

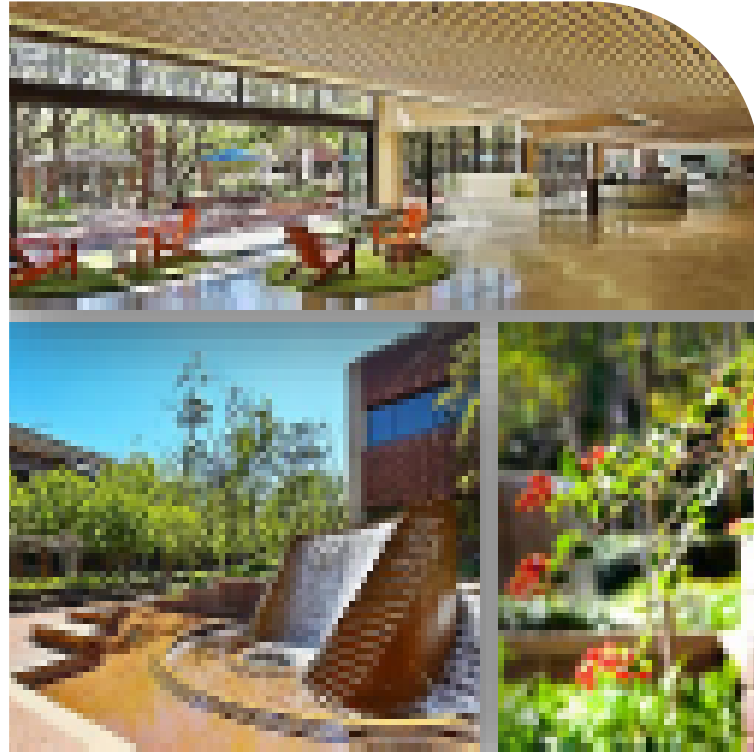


chargepoint

CHARGE TODAY!



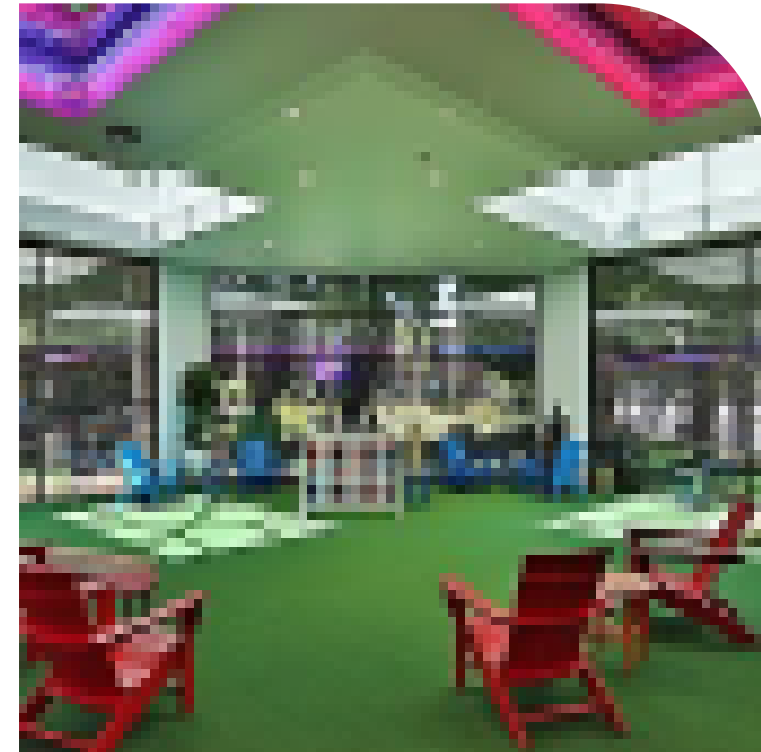
AMENITIES MENU



THE GARDEN

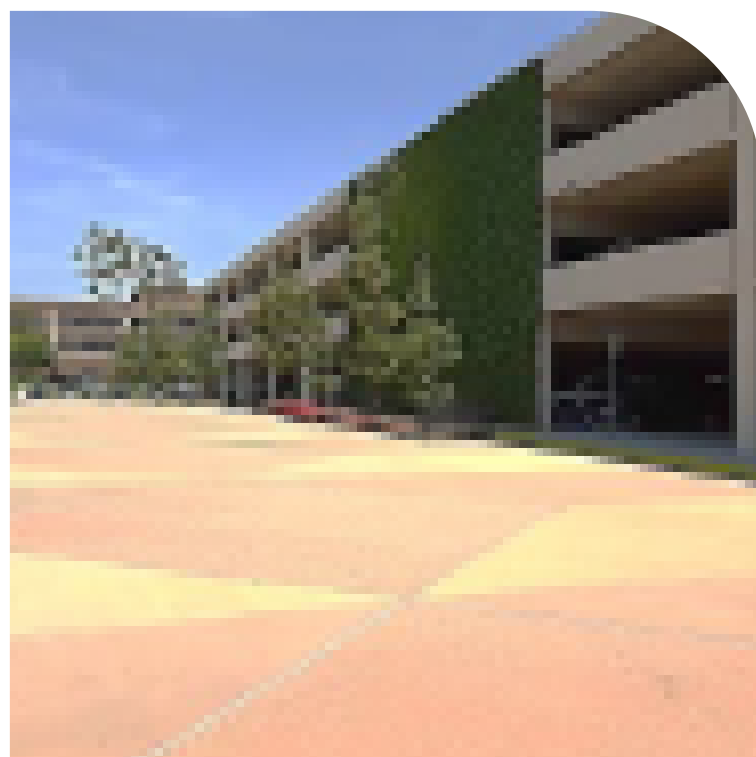
Location: 4900, B-Pod East
Lounge: \$50/hr or \$1000/day
Courtyard: \$125/hr or \$850/day
Both: \$150/hr or \$1000/day

Lounge Capacity: 32
Courtyard Capacity: 72
Total Capacity: 104



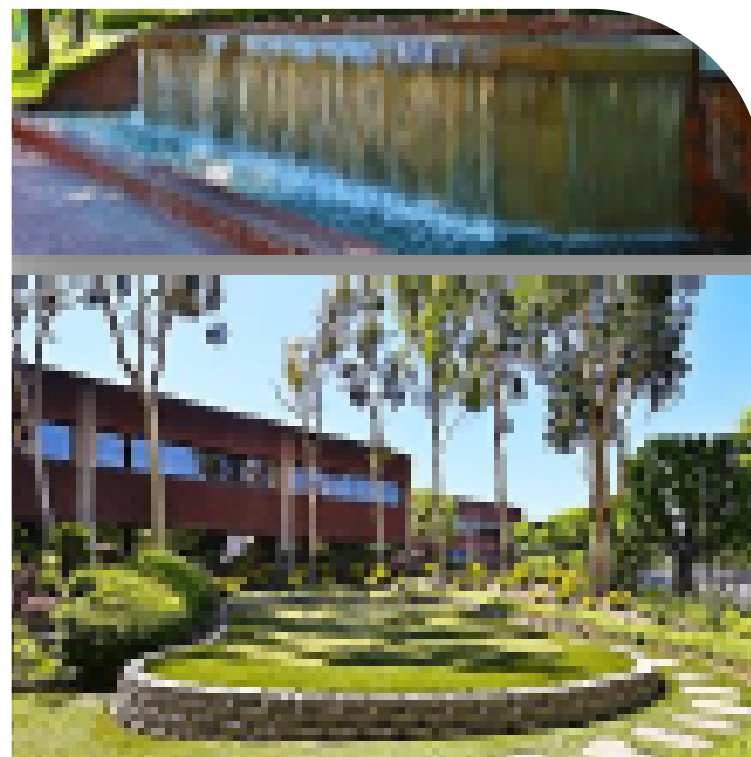
STUDIO 89'

Location: 4910, near Trimana
\$90/hr or \$700/day



PARKADE

Location: 4920 Garage
\$75/hr or \$500/day



FOUNTAIN TERRACE

Location: 4910, outside
Trimana
\$90/hr or \$700/day
Capacity: 60



FORUM HALL

Location: 4910, near Trimana
\$85/hr or \$500/day
Capacity: 30

Capacity calculated based on available seating. Extra seating and special accommodations may be granted upon request. Please reserve at least two weeks in advance prior to your event. Cancellations made less than 48 hours before the event will receive 50% refund.

THE CAMPUS | at SGV

CONNECT WITH US

Building Management Office

Location : 4900 Rivergrade Rd,
Irwindale, Ca 91706

Suite : A110

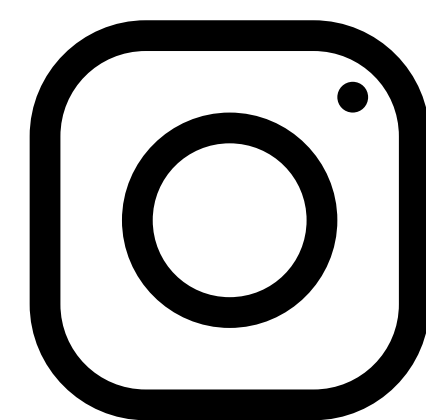
Office Phone : (626) 813 - 2525

Hours : Mon - Fri 8:00 Am - 5:00 Pm

Visit our Website Below

[CLICK HERE](#)

THECAMPUSATSGV.COM



[@THECAMPUSATSGV](#)