

MARCH 2024



**MONTHLY NEWSLETTER**

**THE CAMPUS** | **at SGV**



[THECAMPUSATSGV.com](https://www.thecampusatsgv.com)

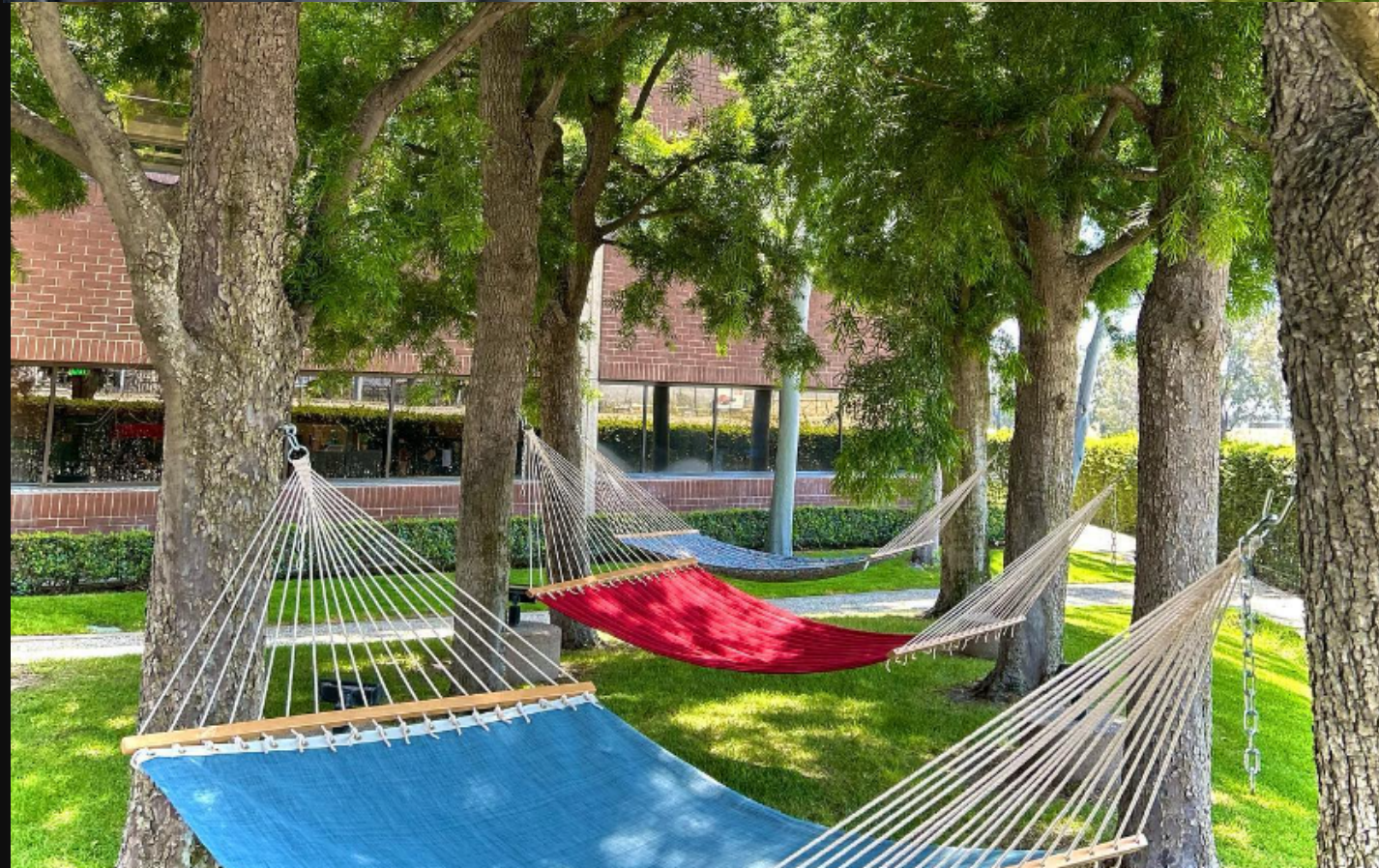


# Welcome

704,620 square foot, low-rise suburban office campus

## ABOUT

Comprised of three separate buildings, the campus was developed in 1989 by Home Savings of America and originally served as their state of the art corporate headquarters.



Social Media @thecampusatsgv

FOR MANAGEMENT:



+626-813-2525

# CAMPUS AMENITIES

EXPERIENCE ALL THAT THE CAMPUS HAS TO OFFER

AVAILABLE DAILY

Monday - Friday

ENJOY THE CAMPUS TODAY!



**BIKE SHARE PROGRAM**



**HAMMOCK GARDEN**



**GYM FACILITY**

- HAMMOCK GARDEN
- BIKE SHARE PROGRAM
- PUTTING GREEN
- RAQUETBALL COURTS
- ARCADE
- BASKETBALL COURTS
- WALKING PATH

- FILTERED WATER STATIONS
- GYM FACILITY
- CONFERENCE ROOMS
- EV-CHARGING
- LOCKER ROOMS
- YOGA
- ON-SITE CAFE - TRIMANA



## FEBRUARY RECAP

Thank you to all who participated in our Flower Bouquet Giveaway!

## UPCOMING EVENTS

*Popcorn Thursday's* every Thursday for the month of February. All employees are welcome to stop by Suite A-110 from 12:00 PM - 1:00 PM for a bag of delicious popcorn!





Hosted by  
7Elements Yoga

# Yoga Class

Join us Every Tuesday  
@12:15 PM

**SIGN UP**

Duration: 50 Minutes

**FREE TO SIGN UP**

Located at the 4900 Building  
Racquetball Court

**WEBSITE**

Yoga Session that blends  
movement with meditation to  
clear your head and recharge  
your body.





**MONTHLY  
SPECIAL:  
GYRO  
SANDWHICH  
\$7.49**

# TRIMANA CAFE

## 4910 BUILDING

Everything Prepared with High Quality, Rich Taste and Made Fresh on Order.



**HOURS**

7:00A.M. - 3:00P.M. | Monday - Friday



## GYM FACILITY

# START YOUR JOURNEY WITH US

HOURS : 6AM - 12AM DAILY  
LOCATION : 4900 RIVERGRADE RD.

[VISIT WEBSITE](#)

## REACH YOUR BODY GOALS

- The Fitness Center is for the exclusive use of tenants and employees only. NO Guests Allowed.
- Waivers must be signed in order to be granted access to the fitness center.
- Food and beverages not allowed. Water bottles only.
- Shoes and shirts must be worn at all times.
- Tenants and Employees must carry a towel and wipe down equipment after use.
- Use of the equipment in the fitness center is at your own risk.





## NEED A WORK BREAK? EXPLORE STUDIO 89'

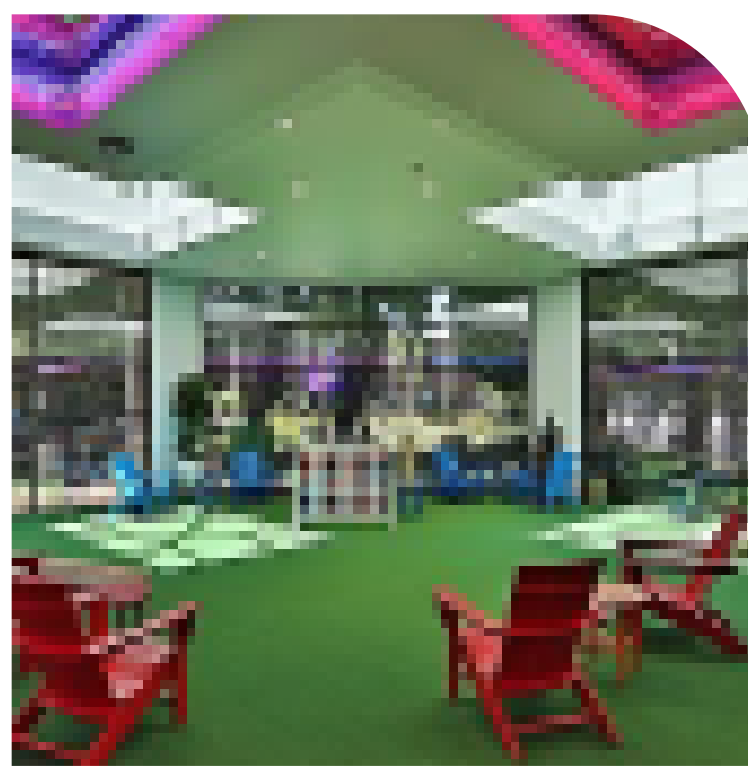


---

**HOURS : M- F | 8AM - 5PM**



**SHOOT TO WIN**

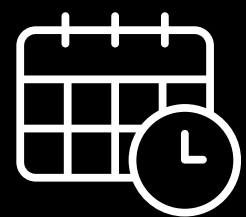


**LOUNGE**



**FOOSEBALL**





**AVAILABLE DAILY**




**The Campus | at SGV**  
4900 Rivergrade Rd.

- Download the movatic app and create an account
- Scan the QR code on the bike
- Enjoy your ride! Be sure to follow all rules of the road, & always ride in control
- Lock your bike to a station and select end rental in app

**BIKE SHARE PROGRAM**

**RIDE  
TODAY!**

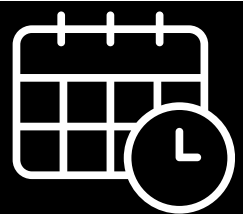
 (313) 217 - 9220

 [support@tandem-mobility.com](mailto:support@tandem-mobility.com)

- A** 4 Pedestals, 8 Ports
- B** 8 Pedestals, 16 Ports
- C** 5 Pedestals, 10 Ports



**\*Each pedestal has two ports.**



**AVAILABLE DAILY**



**The Campus | at SGV**

- Sign up for ChargePoint or log in to your account in the app
- To request to connect, open the main menu then click "Account"
- Click "Connections"
- Then tap the "Browse Connections" buttons
- Search for an organization by name or enter a connection code (Please contact MGMT office for connection code)

**Management Office | (626) 813 - 2525**

**EV CHARGING**



**chargepoint**

**CHARGE TODAY!**



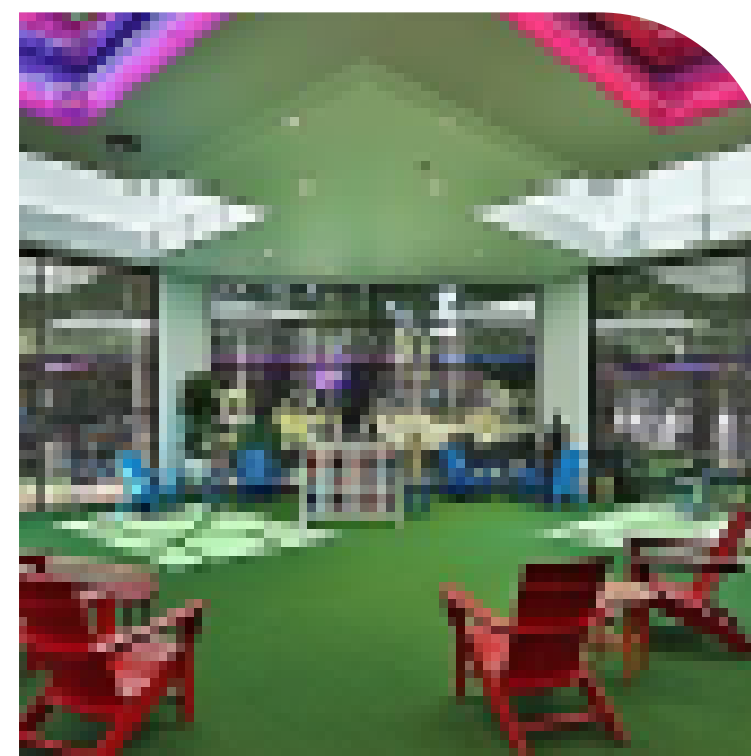
# AMENITIES MENU



## THE GARDEN

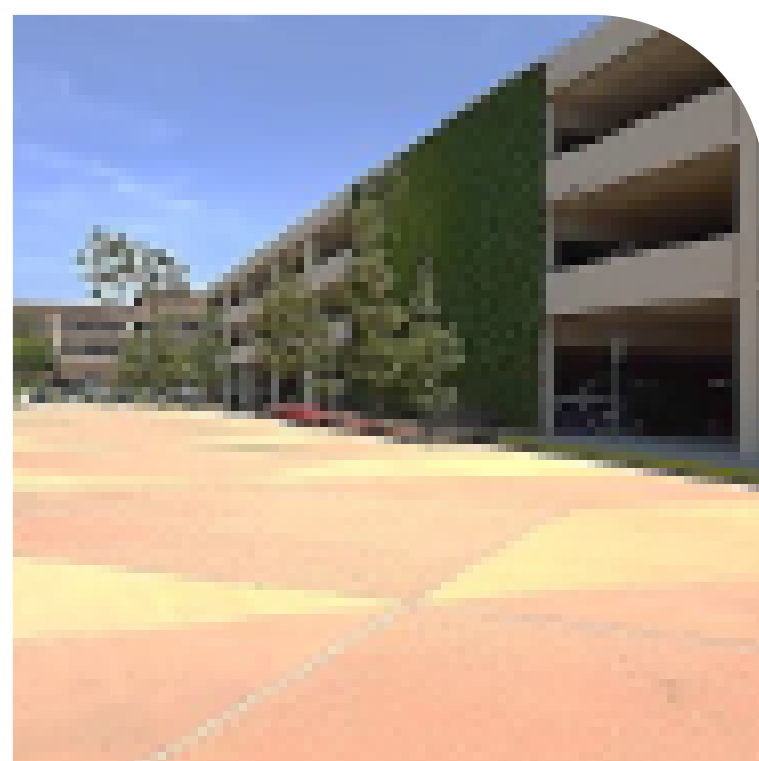
Location: 4900, B-Pod East  
Lounge: \$50/hr or \$1000/day  
Courtyard: \$125/hr or \$850/day  
Both: \$150/hr or \$1000/day

Lounge Capacity: 32  
Courtyard Capacity: 72  
Total Capacity: 104



## STUDIO 89'

Location: 4910, near Trimana  
\$90/hr or \$700/day



## PARKADE

Location: 4920 Garage  
\$75/hr or \$500/day



## FOUNTAIN TERRACE

Location: 4910, outside  
Trimana  
\$90/hr or \$700/day  
Capacity: 60



## FORUM HALL

Location: 4910, near Trimana  
\$85/hr or \$500/day  
Capacity: 30

Capacity calculated based on available seating. Extra seating and special accommodations may be granted upon request. Please reserve at least two weeks in advance prior to your event. Cancellations made less than 48 hours before the event will receive 50% refund.

THE CAMPUS | at SGV

# CONNECT WITH US

## Building Management Office

Location : 4900 Rivergrade Rd,  
Irwindale, Ca 91706

Suite : A110

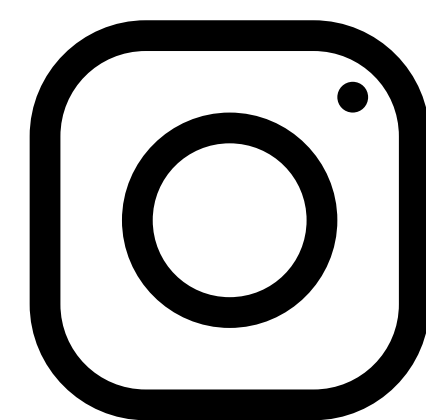
Office Phone : (626) 813 - 2525

Hours : Mon - Fri 8:00 Am - 5:00 Pm

Visit our Website Below

[CLICK HERE](#)

[THECAMPUSATSGV.COM](http://THECAMPUSATSGV.COM)



[@THECAMPUSATSGV](#)