

OCTOBER 2023



MONTHLY NEWSLETTER

THE CAMPUS | **at SGV**



[THECAMPUSATSGV.com](https://www.thecampusatsgv.com)

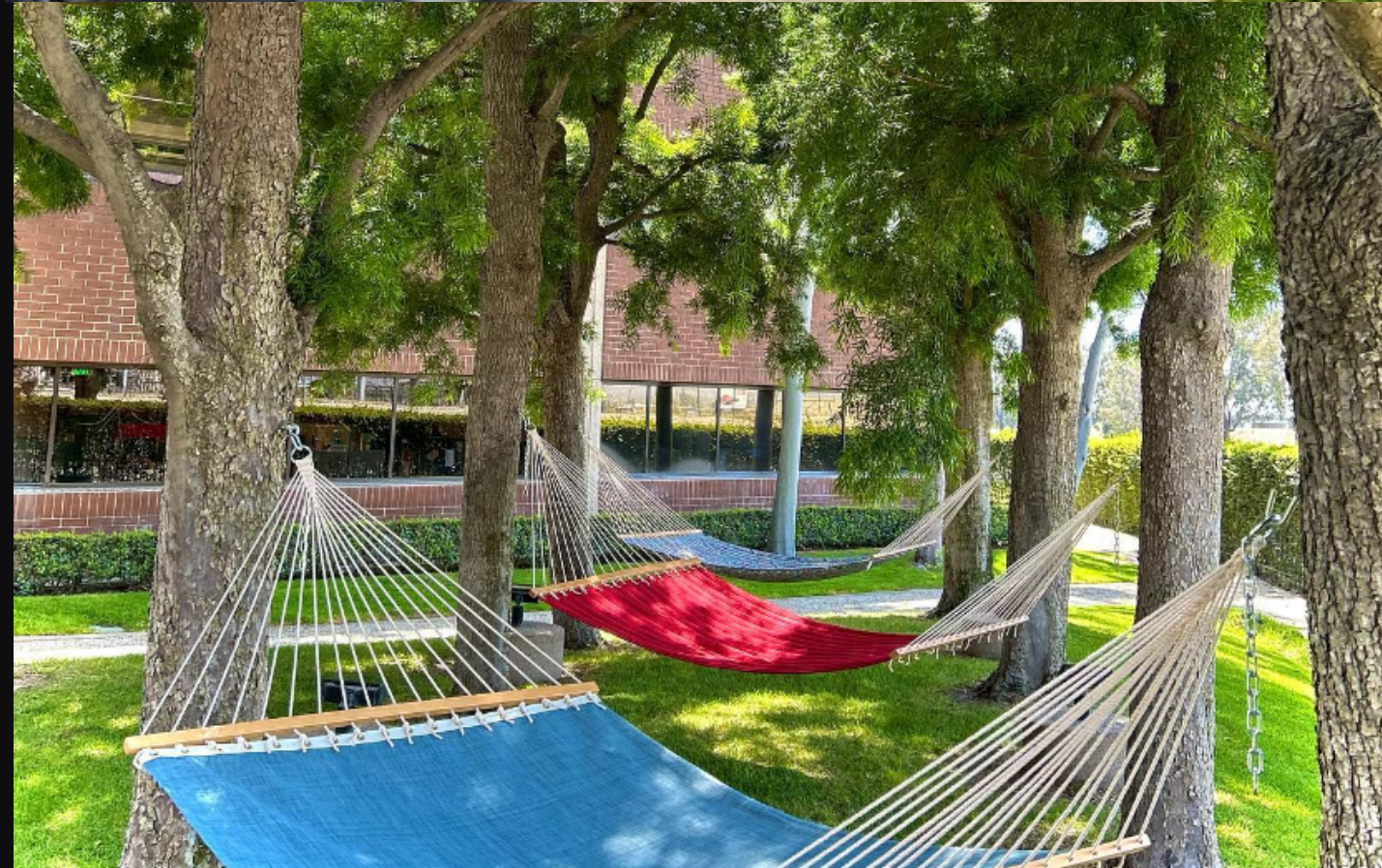


Welcome

704,620 square foot, low-rise suburban office campus

ABOUT

Comprised of three separate buildings, the campus was developed in 1989 by Home Savings of America and originally served as their state of the art corporate headquarters.



Social Media @thecampusatsgv

FOR MANAGEMENT:



+626-813-2525

CAMPUS AMENITIES

EXPERIENCE ALL THAT THE CAMPUS HAS TO OFFER

AVAILABLE DAILY

Monday - Friday

ENJOY THE CAMPUS TODAY!



**BIKE SHARE
PROGRAM**



**HAMMOCK
GARDEN**



GYM FACILITY

- HAMMOCK GARDEN
- BIKE RENTAL
- PUTTING GREEN
- RAQUETBALL COURTS
- ARCADE
- BASKETBALL COURTS
- WALKING PATH
- YOGA
- ON-SITE CAFE - TRIMANA

- FILTERED WATER STATIONS
- GYM FACILITY
- CONFERENCE ROOMS
- EV-CHARGING
- LOCKER ROOMS



Hosted by
7Elements Yoga

Yoga Class

Join us Every Tuesday
@12:15 PM

SIGN UP

Duration: 50 Minutes

FREE TO SIGN UP

Located at the 4900 Building
Racquetball Court

WEBSITE

Yoga Session that blends
movement with meditation to
clear your head and recharge
your body.



YOU'RE INVITED

*FALL
AFTERNOON
MIXER*

4900 BUILDING - BPOD COURTYARD

THURSDAY, OCTOBER 19TH

12:30 PM - 2:00 PM

For more information please
contact the management
office (626)-813-2525

Treats, Refreshments & More!



**MONTHLY
SPECIAL:
TERIYAKI CHICKEN
BOWL
\$6.49**

TRIMANA CAFE

4910 BUILDING

Everything Prepared with High Quality, Rich Taste and Made Fresh on Order.



HOURS

7:00A.M. - 3:00P.M. | Monday - Friday



WHAT TO DO DURING AN EMERGENCY EVACUATION

AS A REMINDER, IN THE EVENT OF AN EMERGENCY PLEASE EVACUATE TO THE SPECIFIED LOCATIONS BELOW.

The Campus at SGV | Emergency Evacuation Assembly Locations



GYM FACILITY

START YOUR JOURNEY WITH US

HOURS : 6AM - 12AM DAILY
LOCATION : 4900 RIVERGRADE RD.

[VISIT WEBSITE](#)

REACH YOUR BODY GOALS

- The Fitness Center is for the exclusive use of tenants and employees only. NO Guests Allowed.
- Waivers must be signed in order to be granted access to the fitness center.
- Food and beverages not allowed. Water bottles only.
- Shoes and shirts must be worn at all times.
- Tenants and Employees must carry a towel and wipe down equipment after use.
- Use of the equipment in the fitness center is at your own risk.





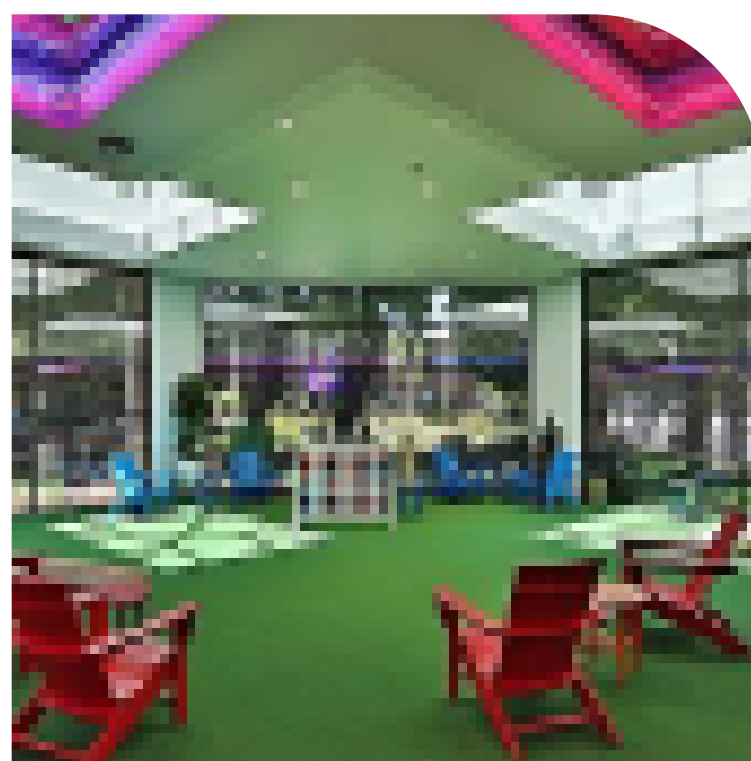
NEED A WORK BREAK? EXPLORE STUDIO 89'



HOURS : M- F | 8AM - 5PM



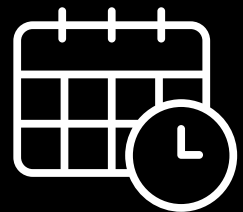
SHOOT TO WIN



LOUNGE



FOOSEBALL



AVAILABLE DAILY




The Campus | at SGV
4900 Rivergrade Rd.

- Download the movatic app and create an account
- Scan the QR code on the bike
- Enjoy your ride! Be sure to follow all rules of the road, & always ride in control
- Lock your bike to a station and select end rental in app

BIKE SHARE PROGRAM

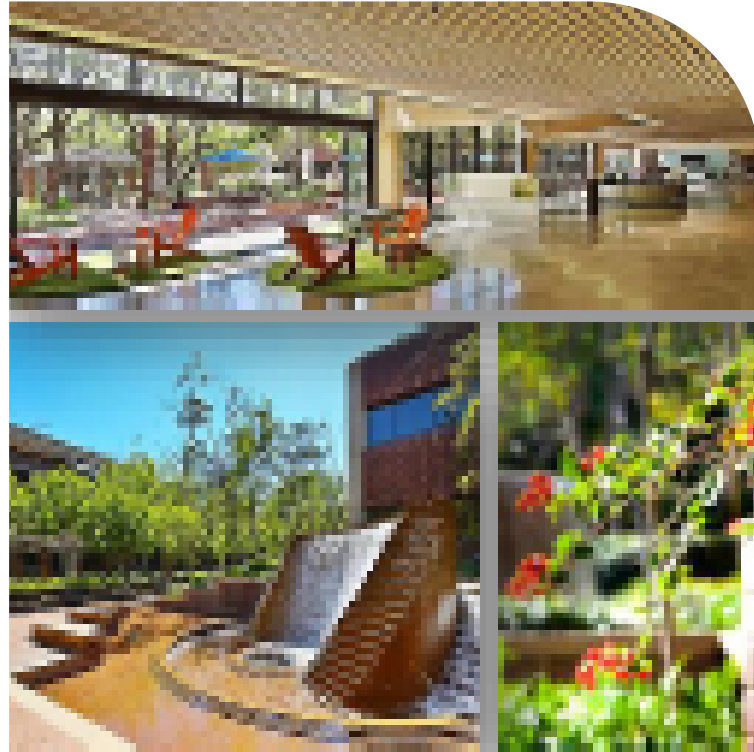
**RIDE
TODAY!**

 (313) 217 - 9220

 support@tandem-mobility.com



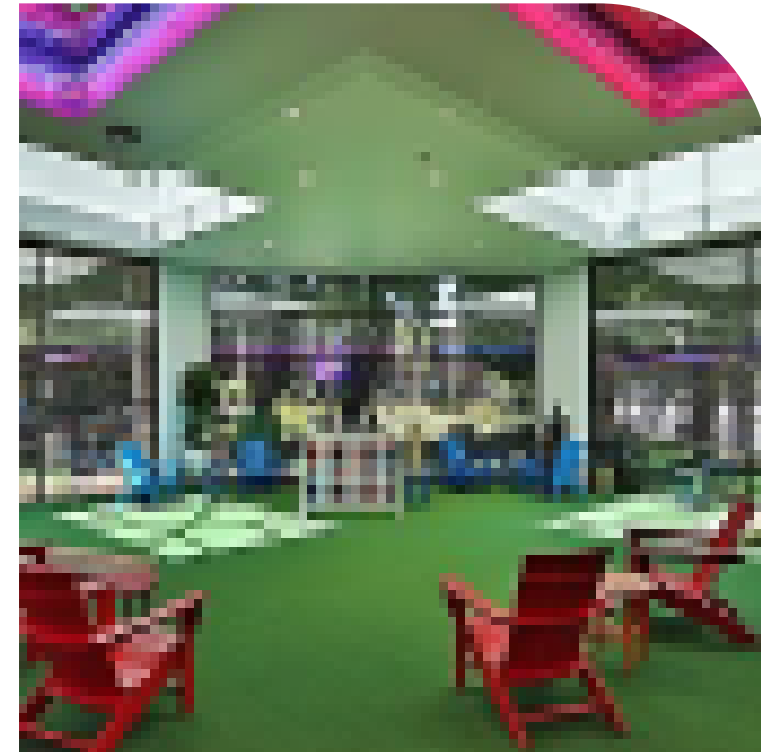
AMENITIES MENU



THE GARDEN

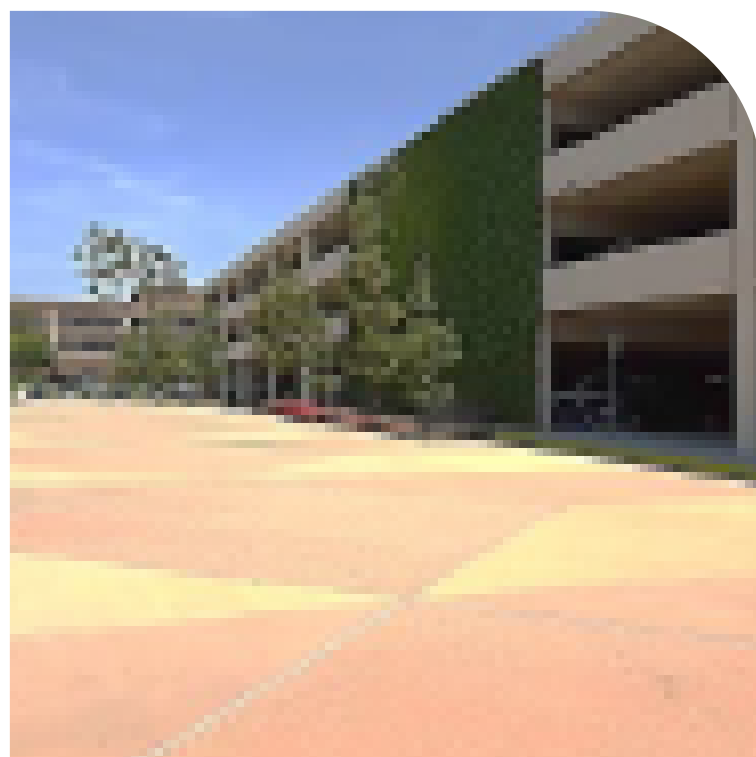
Location: 4900, B-Pod East
Lounge: \$50/hr or \$1000/day
Courtyard: \$125/hr or \$850/day
Both: \$150/hr or \$1000/day

Lounge Capacity: 32
Courtyard Capacity: 72
Total Capacity: 104



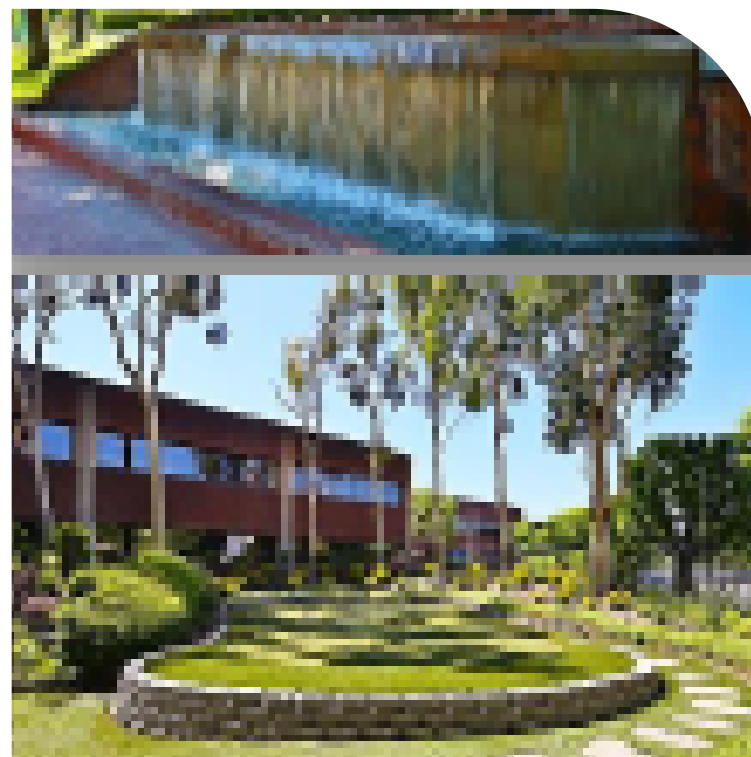
STUDIO 89'

Location: 4910, near Trimana
\$90/hr or \$700/day



PARKADE

Location: 4920 Garage
\$75/hr or \$500/day



FOUNTAIN TERRACE

Location: 4910, outside
Trimana
\$90/hr or \$700/day
Capacity: 60



FORUM HALL

Location: 4910, near Trimana
\$85/hr or \$500/day
Capacity: 30

Capacity calculated based on available seating. Extra seating and special accommodations may be granted upon request. Please reserve at least two weeks in advance prior to your event. Cancellations made less than 48 hours before the event will receive 50% refund.

THE CAMPUS | at SGV

CONNECT WITH US

Building Management Office

Location : 4900 Rivergrade Rd,
Irwindale, Ca 91706

Suite : A110

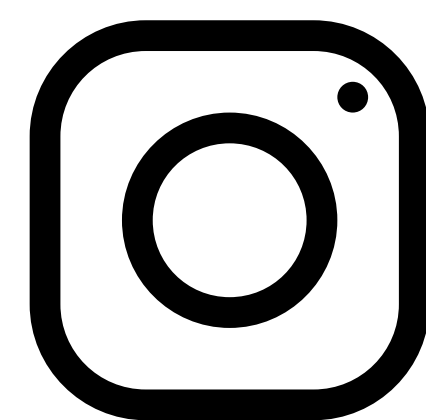
Office Phone : (626) 813 - 2525

Hours : Mon - Fri 8:00 Am - 5:00 Pm

Visit our Website Below

[CLICK HERE](#)

THECAMPUSATSGV.COM



[@THECAMPUSATSGV](#)